

LEFA

USER MANUAL

Rotary tiller

Model : RT(FD)85.95.105.115.125.135

ATTENTION



**3-Point Rotary Tiller of LEFA may present dangers during its use.
Read the user manual attentively before its use.**



Thank you for having bought the Rotary Tiller of LEFA.

Please follow our recommendations to be fully satisfied with this purchase.

In this manual you will find all the information of use and security.

It is important to follow the instructions for the regular operation of the apparatus and the safety of the operator.

Please read attentively and carefully all the operations and the caution concerning the security described in this manual before the startup of the machine.

LEFA declines all responsibility for damage caused by the non-reading of the instructions given in this manual or for any use not in accordance with the destination of the machine or lack of maintenance.

All these machines of LEFA are equipped with an identification plate where you will find the data which are essential to order spare parts.

The models may be different for some details.

Each machine of LEFA is equipped with an identification plate where you will find all the data which are fundamental to verify the accounting between the machine and the tractor and for all order of spare parts.

The rotary tiller of LEFA is designed for the work of the ground according to the model.

Labels of safety and plate of identification



Read user manual before use or maintenance.



Stop the tractor engine and remove the key before working on the machine.



Risk of being caught by the transmission. Do not approach the machine and avoid wearing loose clothes which could become entangled in moving parts.



PTO Speed max. : 540 tr/min MAX



Risk of projections. To be held apart from the operating range of the machine. Make sure that all the guards are in their place during the use.



Danger of cutting. To be held apart from the operating range of the machine. Make sure that all the guards are in their place during the use.

It is strictly prohibited to remove protections of safety, labels of safety and the plate of identification manufacturer.

Safety rules:

In order to avoid accidents during work, it is necessary to observe the most elementary rules of prudence:

§ 1. Operator

- The operator should not start the machine if they don't have all his mental and physical faculties:
 - § Good eyesight and good hearing
 - § Read and study the manual
 - § Be attentive to its and others' security
 - § Be familiar with the use and maintenance of the machine
 - § It is strictly forbidden to drink alcohol, ingest drugs and other substances that might affect the use of the machine
- Do not wear loose floating clothing that could be caught by moving parts.
- Wear the appropriate security equipment :
 - § Standardized working gloves
 - § Safety shoes
 - § Helmet
 - § Hearing protection device
 - § Protective glasses



§ 2. Machine

- The coupling must be done only on the points provided for this purpose in accordance with safety standards.
- Prohibit using the machine as means of transport of people, animals or objects.
- The machine should be in perfect working condition, maintained with original parts.
- It is strictly prohibited to make modifications on the machine without authorization of the manufacturer.

§ 3. Utilization

- Prudence is required during the attachment of the machine to the tractor and during its uncoupling.
- The maintenance, the cleaning as well as the adjustments must be made only if the engine of the tractor is turned off and the ignition key is removed.
- Make sure that no one is in the operating area of the machine.

LEFA disclaims all the responsibilities for damages of nature reason caused by the non-observance of safety rules and of use.

GENERAL CONDITIONS

The Buyer contractually agrees with the current conditions for sale and guarantee clearly not to be contrary to his/her own situation.

For all these goods sent by delivery or mailing, we will invoice you for the price of the courier or mail.

Delivery period is only for reference.

A delay for the appointed time to the goods could not, in any case, cause the claims for damages in any way.

Our goods still take a risk in the process of delivery to the destination, even if the machine is sold at freight prepaid.

GUARANTEE

Our new equipment is warranted against defects in materials and construction defect for one year from the date of delivery. At the end of that period, the guarantee legally ceases.

Excluded from the guarantee:

Deterioration or damages are resulted from an insufficiency (misuse of care or maintenance) accident, misuse or abuse or due to normal wear and tear.

The equipment transformed, modified, repaired or disassembled even only partly outside.

The guarantee is limited to the exchange of the defect recognized by our technical department. The parts, which were supposed to be defective, will have to be refunded freely to our establishment accompanied by a request for guarantee. We neither take part in the expenses of labor caused by disassembling or the reassembly in any manner, nor in the expenses and consequences of the immobilization of the material.

To invoke the benefit of the guarantee, the customer must notify us within three days and in writing, of the defects attributed to the equipment and provide all justifications. The guarantee does not apply if the material is not refunded in the state where it breaks, or if it is dismantled, repaired, modified beforehand either by a third or by user or the customer.

The parts will be always invoiced, and an expense account will be submitted only after acceptance of the guarantee by our engineering department.

Our responsibility is expressly limited to the defined guarantee above. She could not be committed to reason of accident caused by persons and things in any case, even by the result of a fault or a vice of the sold equipment.

Reserve property: By convention, we reserve the ownership of supplied goods until the last day of full payment.

**Dispute: in the event of dispute, only the Court of Bankruptcy is qualified.
Features and acceptance of payment remake neither novation, nor violation of
the clause of the jurisdiction.**

STARTING



Read all this manual before use, make the level of the central case and side casing with oil EP 80W90

After working for 30h, drain the housing by the plug to this operation in advance, check the quantity by using the gauge, then re-drain all 200h of work

Before use, make sure that the PTO speed of the tractor is 540 r/m to avoid damaging the machine.

The speed of use recommended at work is from 1.2 to 1.5 Km/h.



TENSION OF THE CHAINS

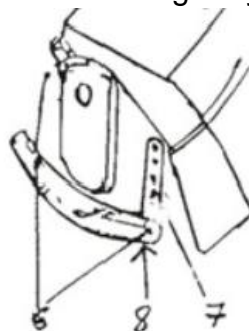
The tension of the chain is done by a spring inside the housing, in the event of noise, please check the spring and the state of the chain every 200 hours of work, check these parts by a specialist workshop.

Reassemble the housing with a new joint.

This maintenance provides a good service life of the chain and the machine

Adjusting working depth

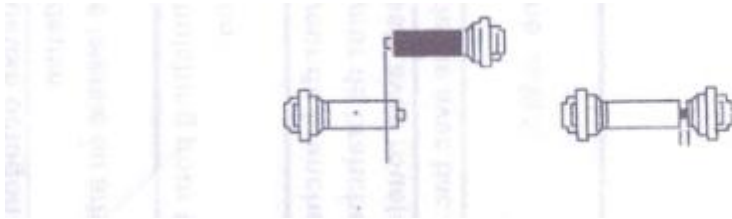
Always turn off the engine of the tractor, as well as the parts in movement. Loosen the screws (6) Unscrew the screw (7) Choose the correct height by adjusting the wheel right and left (8) Tighten the loose screws.





TRANSMISSION

When the machine is fixed on a tractor, check the cardan length. If it is too long to cut the outer protection, and then take good care of file work position, the tube must be one after another at least 150mm (below) inspection, check when the tool is mounted on the tractor.



Make check the condition and installation of the transmission (cardan) by a specialized worker. Any damaged protection must be always changed, always attach the 2 channels of the protector; it should never turn to work.

When you attach the machine to the tractor, always put the pins to the axes coupling, change them if they are in poor condition.

When attaching the cardan, make sure it is blocked at both ends by locks when you hook the machine to the tractor. The protections of the cardan must be in perfect condition and immobile during rotation, use the chain provided by security, when the protections are damaged, replace them quickly.

When the machine is stopped, unhooked from the tractor, use the chain of additional universal joint so that it does not rest on the ground. When fixing the universal joint, ensure that it is blocked.



REPLACEMENT OF THE BLADE

Before all interventions on the machine stop the engine, disconnect the PTO shaft after all moving parts have stopped.

Install the machine on a place, well flat and work as described below.

Unscrew the screws completely (1). Replace worn or damaged blade, pay attention to the assembly. Tighten the screws (1) washer and nut used in (2), (3).



Use only blades of origin for the correct operation of the machine.

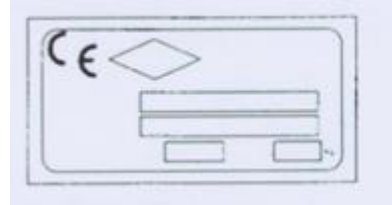
INFORMATION SIGNS

Plate No.1 indicating the model

For transport the machine perhaps delivered without oil

Read the recommendations before use

PTO speed 540r/min

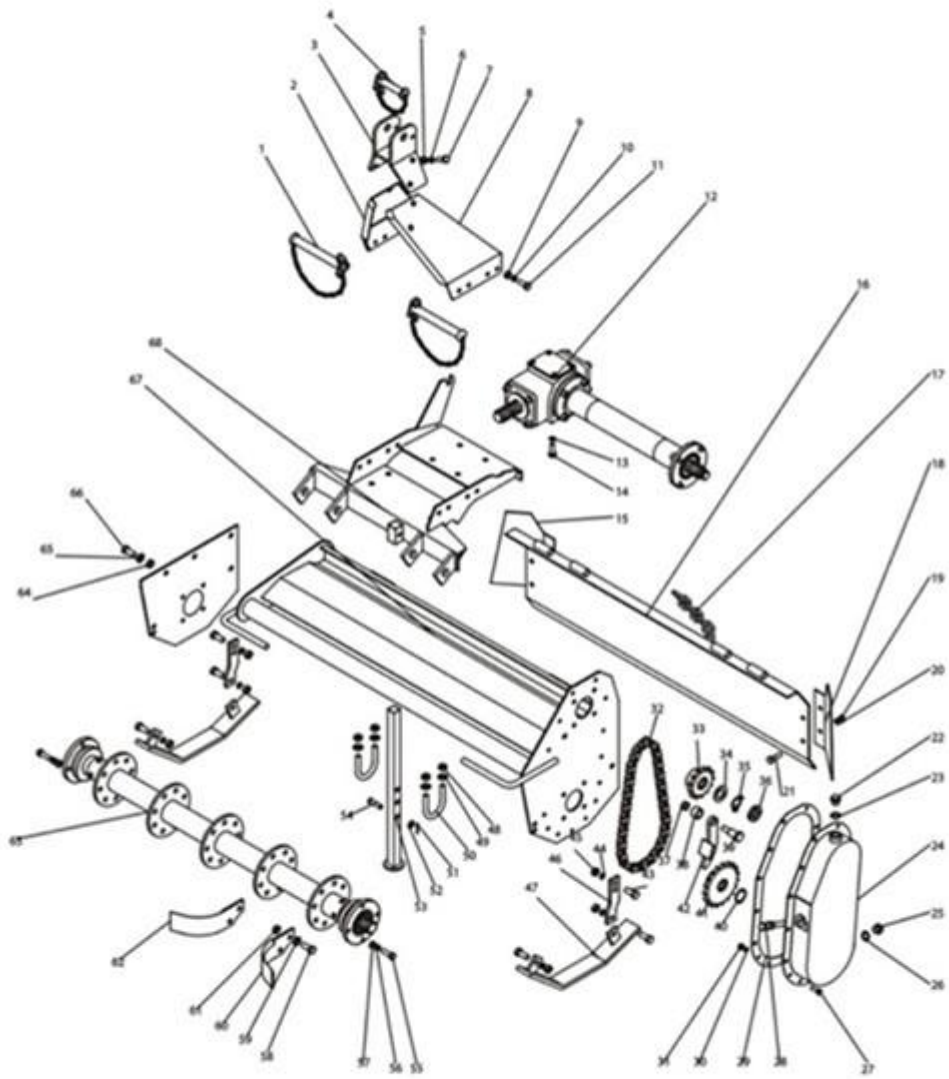


Attention to the throwing of stones



Always keep protections on the parts moving

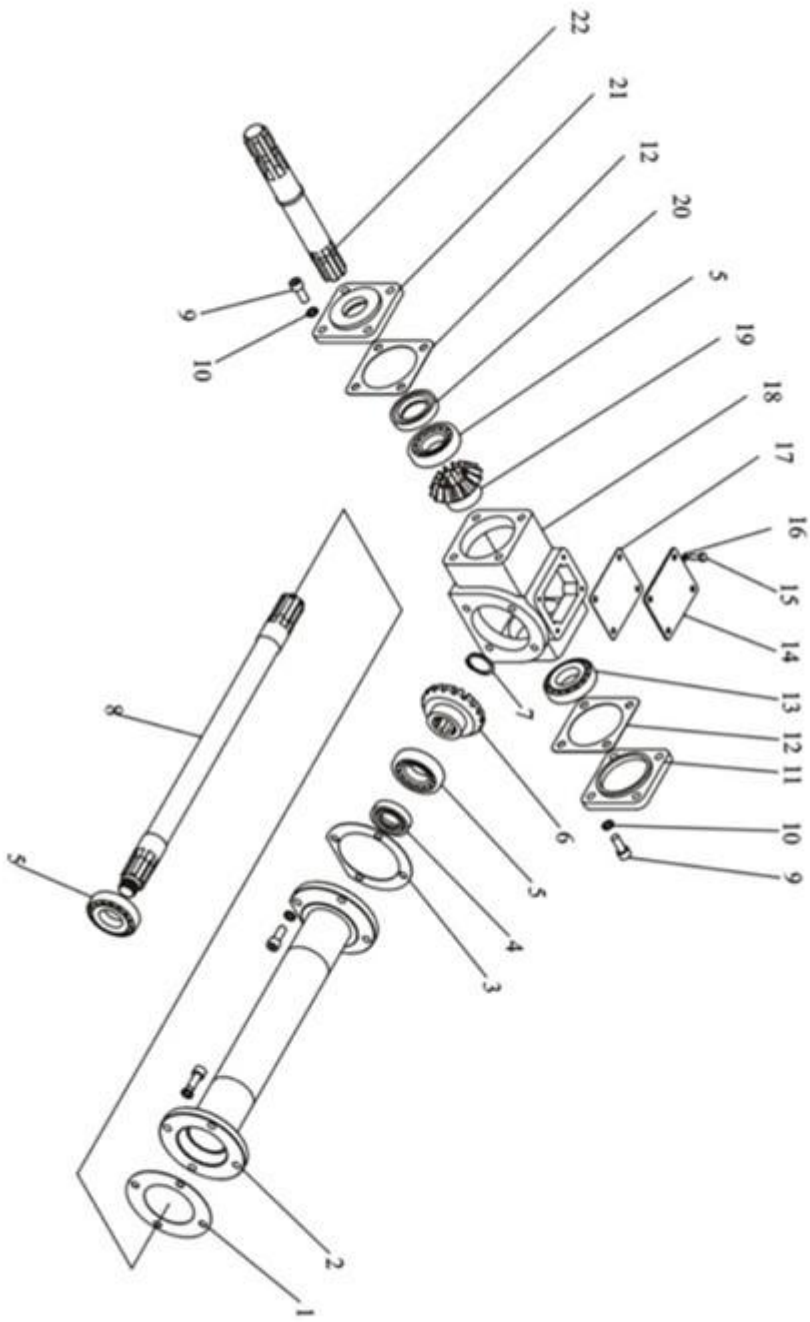
Never intervene on the machine when the PTO is in action and always keep distance.



1. Rotary Tiller Assembly

| Ser.No | Reference | Name | Qty. |
|--------|-------------------|-------------------------|------|
| 1 | RT105-00-012 | Sup. suspension pin | 2 |
| 2 | RT105-00-021 | suspension plate(left) | 1 |
| 3 | RT105-00-022 | Bracket | 1 |
| 4 | RT105-00-013 | Sup. suspension pin | 1 |
| 5 | GB/T6182(M12) | Locknuts M12 | 4 |
| 6 | GB/T95(12) | Plain washer 12 | 4 |
| 7 | GB/T5782(M12×25) | Bolts M12×25 | 4 |
| 8 | RT105-00-023 | suspension plate(right) | 1 |
| 9 | GB/T6182(M10) | Locknuts M10 | 8 |
| 10 | GB/T95(10) | Plain washer 10 | 8 |
| 11 | GB/T5782(M10×30) | Bolts M10×30 | 8 |
| 12 | RT105-02-012 | Gearbox Assembly | 1 |
| 13 | GB/T93(10) | Spring lock washer 10 | 4 |
| 14 | GB/T5782(M10×20) | Bolts M10×20 | 4 |
| 15 | RT105-00-137 | Left protection plate | 1 |
| 16 | RT105-00-015 | Tail plate | 1 |
| 17 | RT105-00-106 | Chain | 1 |
| 18 | RT105-00-136 | Right protection plate | 1 |
| 19 | GB/T6182(M10) | Locknuts M10 | 4 |
| 20 | GB/T95(10) | Plain washer 10 | 4 |
| 21 | GB/T5782(M10×20) | Bolts M10×20 | 4 |
| 22 | RT105-00-114 | Oil filler plug | 1 |
| 23 | RT105-00-115 | Paper gasket | 1 |
| 24 | RT105-00-014 | Chain gearbox | 1 |
| 25 | RT105-00-114 | Oil drain plug | 1 |
| 26 | RT105-00-115 | Paper gasket | 1 |
| 27 | GB/T5782(M8×25) | Bolts M8×25 | 15 |
| 28 | GB/T5782(M12×100) | Adjust Blots M12×100 | 1 |
| 29 | RT105-00-105 | Paper gasket | 1 |
| 30 | GB/T93(8) | Spring lock washer 8 | 15 |
| 31 | GB/T6170(M8) | Nuts M8 | 15 |
| 32 | GB1243.1 | Chain | 1 |
| 33 | RT105-02-101 | Drive chain wheel | 1 |
| 34 | GB/T96(24) | Plain washer 24 | 1 |
| 35 | GB/T858(24) | Stop washer 24 | 1 |
| 36 | GB/T812(M24×1.5) | Circular nut M24×1.5 | 1 |
| 37 | GB/T5782(M12) | Nuts M12 | 1 |
| 38 | RT105-02-113 | Tension plate spacer | 1 |
| 39 | RT105-02-114 | Tension plate pin | 1 |
| 40 | GB894.2 (34) | Circlip 34 | 1 |

| | | | |
|----|------------------|-----------------------|----|
| 41 | RT105-02-102 | Driven chain wheel | 1 |
| 42 | RT105-02-013 | Tension plate | 1 |
| 43 | GB/T5782(M12×30) | Bolts M12×30 | 6 |
| 44 | GB/T93(12) | Spring lock washer 12 | 6 |
| 45 | GB/T6170(M12) | Nuts M12 | 6 |
| 46 | RT105-00-108 | Connecting plate | 2 |
| 47 | RT105-00-020 | Anti-friction plate | 2 |
| 48 | GB/T6182(M10) | Nuts M12 | 4 |
| 49 | GB/T93(12) | Spring lock washer 12 | 4 |
| 50 | RT105-00-107 | U-bolts | 2 |
| 51 | GB/T91(2.5×26) | Open pin 2.5×26 | 1 |
| 52 | GB/T95(10) | Plain washer 10 | 1 |
| 53 | RT105-00-018 | Stay bar | 1 |
| 54 | GB/T882(B10×40) | Pin B10×40 | 1 |
| 55 | GB/T5782(M10×35) | Bolts M10×35 | 8 |
| 56 | GB/T93(10) | Spring lock washer 10 | 8 |
| 57 | GB/T6170(M12) | Nuts M10 | 8 |
| 58 | GB/T5782(M12×30) | Bolts M12×30 | 40 |
| 59 | GB/T95(12) | Plain washer12 | 40 |
| 60 | RT105-00-102 | Blade 1 | 10 |
| 61 | GB/T6182(M12) | Locknuts M12 | 40 |
| 62 | RT105-00-101 | Blade 12 | 10 |
| 63 | RT105-03-001 | Blade axle Assembly | 1 |
| 64 | GB/T6170(M12) | Nuts M12 | 3 |
| 65 | GB/T93(12) | Spring lock washer | 3 |
| 66 | GB/T5782(M12×25) | Bolts M12×25 | 3 |
| 67 | RT105-01-001 | Main welding assembly | 1 |
| 68 | RT105-02-011 | Gearbox seat | 1 |



2.Gearbox Assembly

| Ser.No | Reference | Name | Qty. |
|--------|-------------------|-----------------------|------|
| 1 | RT 105-00-129 | Paper gasket | 1 |
| 2 | RT 105-02-014 | Output shaft sleeve | 1 |
| 3 | RT 105-WG-101 | Paper gasket | 1 |
| 4 | GB13871(35×55×12) | Oil seal 35×55×12 | 1 |
| 5 | GB/T297(30207) | Bearing 30207 | 2 |
| 6 | RT 105-WG-102 | Big bevel gear | 1 |
| 7 | GB894.2(35) | Circlip 35 | 1 |
| 8 | RT 105-WG-103 | Output shaft | 1 |
| 9 | GB70 (M10×25) | Bolts M10×25 | 8 |
| 10 | GB/T93(10) | Spring lock washer 10 | 8 |
| 11 | RT 105-WG-104 | Cover board | 1 |
| 12 | RT 105-WG-105 | Paper gasket | 1 |
| 13 | GB/T297(32010) | Bearing 32010 | 1 |
| 14 | RT 105-WG-106 | Upper cover board | 1 |
| 15 | GB/T5782(M6×15) | Bolts M6×15 | 4 |
| 16 | GB/T93(6) | Spring lock washer 6 | 4 |
| 17 | RT 105-WG-107 | Paper gasket | 1 |
| 18 | RT 105-WG-108 | Gear case | 1 |
| 19 | RT 105-WG-109 | Small bevel gear | 1 |
| 20 | GB/T297(30307) | Bearing 30307 | 1 |
| 21 | GB13871(35×65×12) | Oil seal 35×65×12 | 1 |
| 22 | RT 105-WG-110 | Cover board | 1 |
| 23 | RT 105-WG-111 | Input shaft | 1 |

3.Blade Axe Assembly

| Ser.No | Reference | Name | Qty. |
|--------|-------------------|-----------------------|------|
| 1 | RT 105-00-129 | Paper gasket | 2 |
| 2 | GB/T276(6207) | Bearing | 2 |
| 3 | GB/T5782(M10×35) | Bolts M10×35 | 8 |
| 4 | RT 105-03-107 | Bearing housing | 2 |
| 5 | GB/T93(10) | Spring lock washer 10 | 8 |
| 6 | GB/T6170(M10) | Nuts M10 | 8 |
| 7 | GB13871(40×65×12) | Oil seal 40×65×12 | 2 |
| 8 | RT 105-03-011 | Blade axle | 1 |

